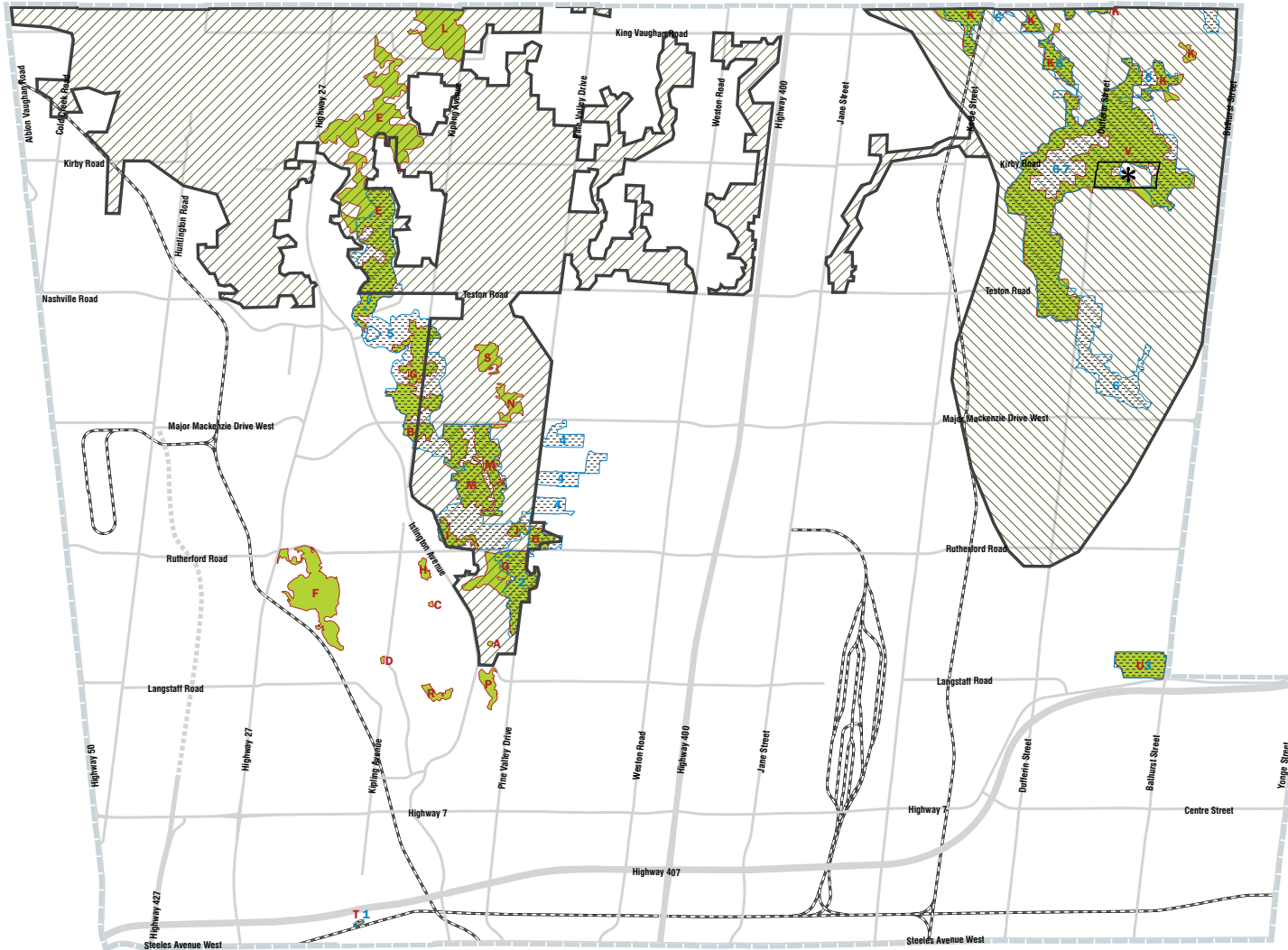


### SCHEDULE 3 ESAs & ANSIs



- Environmentally Significant Areas
- Areas of Natural and Scientific Interest
- Greenbelt Plan Area
- Oak Ridges Moraine Conservation Plan Area
- Minister's Decision on ORMCP Designation Deferred
- Municipal Boundary

#### Index of Environmentally Significant Areas

Area Name	ESA #	Watershed	
A	Boyd's Rock Cross	20	Humber River
B	Boyd Forest	29	Humber River
C	Carex Peckii Area No. 2	23	Humber River
D	Clarence Street Forest	16	Humber River
E	East Humber River	127	Humber River
F	Elder Mills Forest	17	Humber River
G	Glassgo	32	Humber River
H	Graham's Forest	24	Humber River
I	Graham's Forest Complex	25	Humber River
J	Graham's Woods	27	Humber River
K	King-Vaughan Complex	137	Humber River
L	King Creek Forest	56	Humber River
M	Kortright Area	28	Humber River
N	McFayden Forest	30	Humber River
O	McLeans's Forest	26	Humber River
P	Pine Grove Forest	19	Humber River
Q	Pine Valley Forest	21	Humber River
R	Smith's Beech Forest	18	Humber River
S	Sprengel's Forest	31	Humber River
T	Woodbridge Cut	15	Humber River
U	Baker's Wood's	128	Don River
V	McGill Area	73	Don River

#### Index of Areas Natural and Scientific Interest

Area Name	Significance	
1	Woodbridge Cut	Provincially Significant
2	Boyd Conservation Area & Adjacent Lands	Provincially Significant
3	Bakers Woods	Provincially Significant
4	Kleinburg Woodlots	Regionally Significant
5	Humber River	Regionally Significant
6	Maple Uplands and Kettle Wetlands	Regionally Significant
7	Oak Ridges Moraine Maple Spur	Regionally Significant

