

SCALE: 0 10 20 40 50
 Metres 1:1000

NOTE: SUBJECT TO DETAILED DESIGN AND ENGINEERING

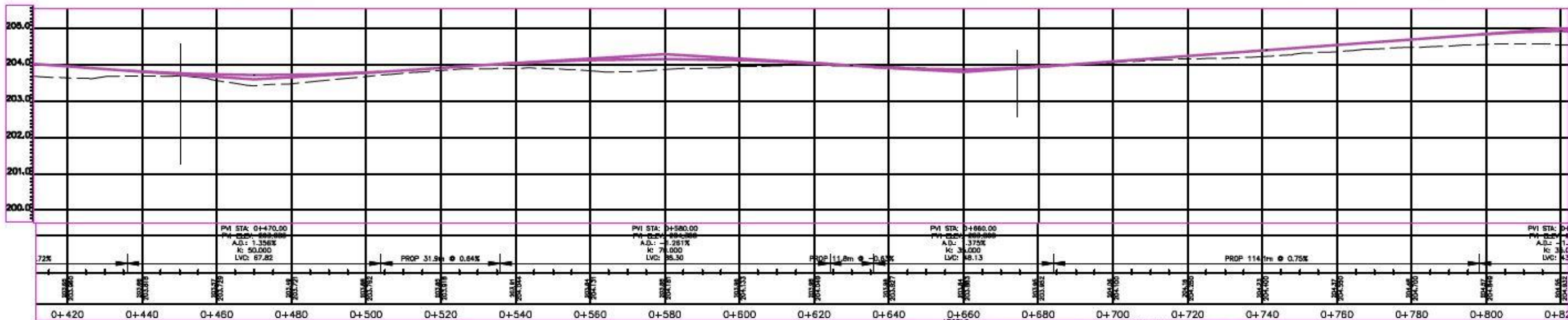
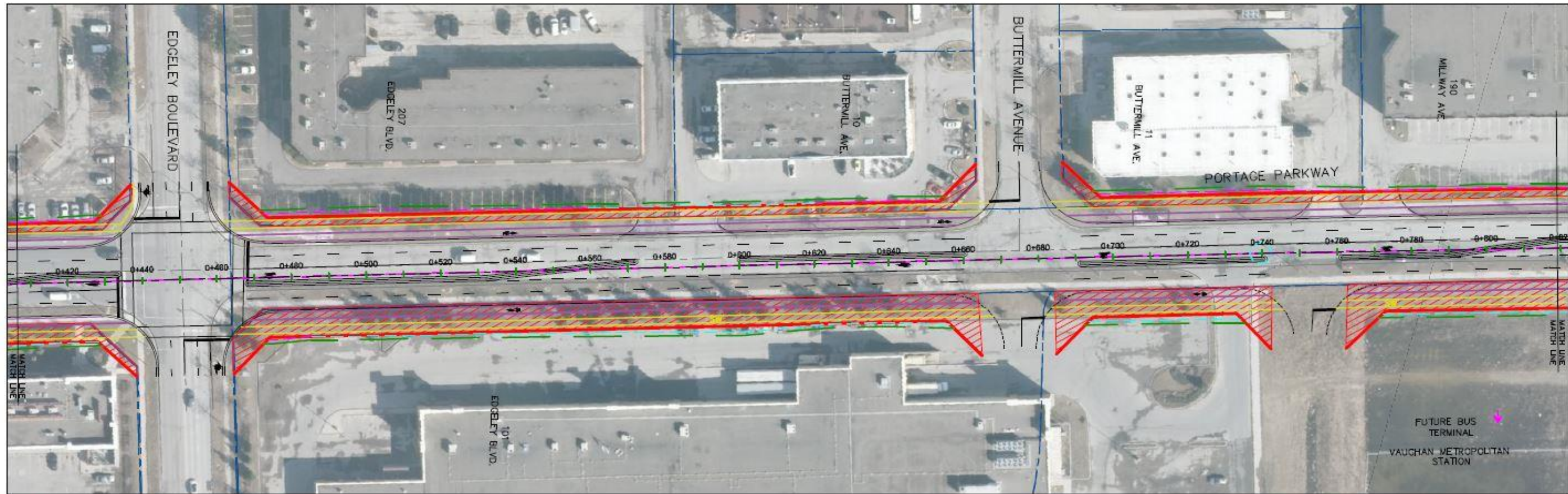
LEGEND:	
	PROPOSED SIDEWALK
	PROPOSED CYCLE TRACK
	PROPOSED CURB/GUTTER
	PROPOSED PROPERTY LINE
	EXISTING PROPERTY LINE
	PROPERTY REQUIREMENTS
	GRADING LIMIT - CUT
	GRADING LIMIT - FILL
	RETAINING WALL
	CONSTRUCTION EASEMENT LIMIT
	Relocated Signal Head
	Relocated Signal Pole
	JANE STREET* - Subject to future York Region Rapid Transit Corridor EA Study
	CREDITSTONE ROAD** - Subject to future City of Vaughan EA Study



Portage Parkway Class EA
 Preliminary Preferred Plan with Profile
 Plate 1 of 3



JULY 14, 2016



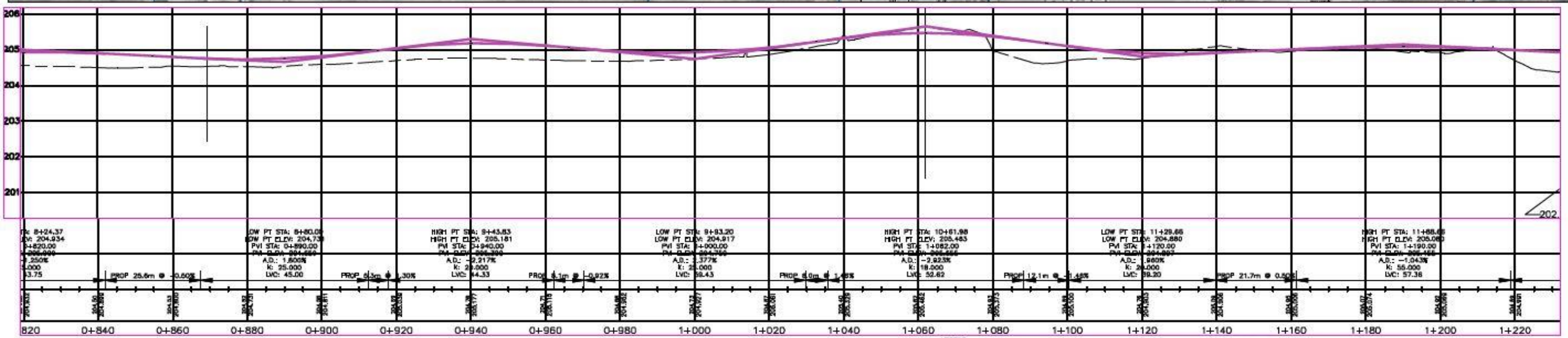
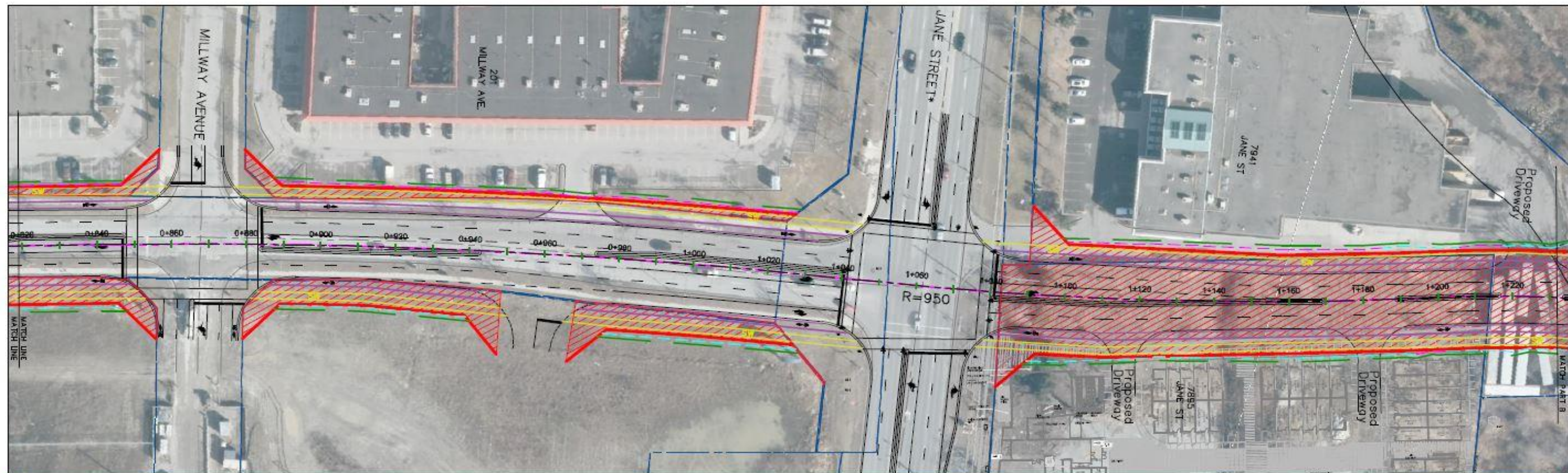
**Portage Parkway Class EA
 Preliminary Preferred Plan with Profile
 Plate 2 of 3**

SCALE: 0 10 20 40 60
 Metres 1:1000

NOTE: SUBJECT TO DETAILED DESIGN AND ENGINEERING

	PROPOSED SIDEWALK		GRADING LIMIT - FILL RETAINING WALL
	PROPOSED CYCLE TRACK		CONSTRUCTION EASEMENT LIMIT
	PROPOSED CURB/GUTTER		Relocated Signal Head
	PROPOSED PROPERTY LINE		Relocated Signal Pole
	EXISTING PROPERTY LINE	JANE STREET* - Subject to future York Region Rapid Transit Corridor EA Study	
	PROPERTY REQUIREMENTS	CREDITSTONE ROAD** - Subject to future City of Vaughan EA Study	
	GRADING LIMIT - CUT		





**Portage Parkway Class EA
 Preliminary Preferred Plan with Profile
 Plate 3 of 3**

NOTE: SUBJECT TO DETAILED DESIGN AND ENGINEERING

SCALE: 0 10 20 40 50
 Metres 1:1000

LEGEND:

- PROPOSED SIDEWALK
- PROPOSED CYCLE TRACK
- PROPOSED CURB/CUTTER
- PROPOSED PROPERTY LINE
- EXISTING PROPERTY LINE
- PROPERTY REQUIREMENTS
- GRADING LIMIT - CUT
- GRADING LIMIT - FILL
- RETAINING WALL
- CONSTRUCTION EASEMENT LIMIT
- Relocated Signal Head
- Relocated Signal Pole

JANE STREET* - Subject to future York Region Rapid Transit Corridor EA Study
 CREDITSTONE ROAD** - Subject to future City of Vaughan EA Study

JULY 14, 2016



Figure 21: Preferred Design